

CONCRETE ANCHORING INSTRUCTIONS

Tools Required:

- Marker
- High Speed Power Drill
- 1/2" Masonry Drill Bit
- Socket Wrench with 3/4" Drive

Parts Included:

- 1—Base Plate
- 4—Concrete Wedge Bolts

1



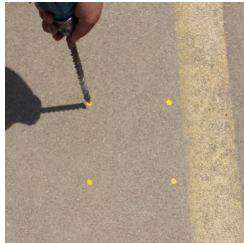
- ◆ Position base plate in desired anchoring location.

2



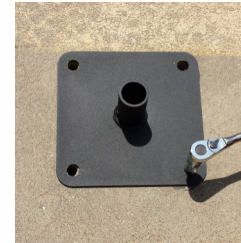
- ◆ Mark the four base holes to be drilled.

3



- ◆ Use high speed power drill with 1/2" masonry bit and core drill each hole 5" in

4



- ◆ Position base plate over holes.
- ◆ Using socket wrench with 3/4" drive, thread all four concrete wedge bolts into core drilled holes.

5



- ◆ Tighten concrete bolts until head securely holds base plate to surface.

****WARNING: MUST ANCHOR UNIT ON THE SAME LEVEL AS THE PARKING LOT FOR PROPER FUNCTIONALITY****

