

ASPHALT ANCHORING INSTRUCTIONS

Tools Required:

- ◆ Marker
- ◆ High Speed Power Drill
- ◆ 3/ 4" Masonry Drill Bit
- ◆ Wide Flat Head Hammer
- ◆ Socket Wrench with 15/ 16" Drive

Parts Included:

- ◆ 1—Base Plate
- ◆ 4—Mungo Plugs
- ◆ 4—Hex Lag Screws
- ◆ 4—Flat Washers

1



- ◆ Position base plate and spring in desired anchoring location.
- ◆ Mark the four base holes to be drilled.

2



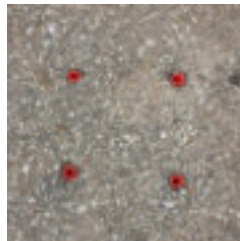
- ◆ Use high speed power drill with 3/4" masonry bit and core drill each hole 6" in depth.

3



- ◆ Using the wide flat hammer stuff mungo plugs into core drilled holes.

4



- ◆ Make sure top of mungo plug is flush with asphalt surface.

5



- ◆ Place base over four holes.
- ◆ Flat washer and hex screw will be used to secure base.
- ◆ Using socket wrench with 15/16" drive, thread all four hex lag screws into core drilled holes.

6



- ◆ Tighten hex screw until head securely holds base plate in place

****WARNING: MUST ANCHOR UNIT ON THE SAME LEVEL AS THE PARKING LOT FOR PROPER FUNCTIONALITY****

